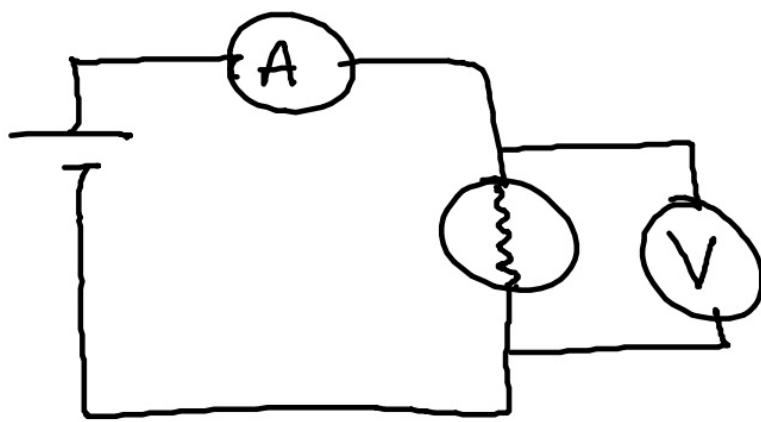


•Ex: A single loop circuit is made with a 1.5 volt battery, and a light bulb. An ammeter is used to measure a 0.15A current in the loop. What is the resistance of the bulb in this circuit?



$$\begin{aligned}\Delta V &= 1.5 \text{ V} \\ I &= 0.15 \text{ A} \\ R &= ?\end{aligned}$$

$$I = \frac{\Delta V}{R} \quad R = \frac{\Delta V}{I} = \frac{1.5}{0.15}$$

$$R = 10 \Omega$$